

**FALL QUARTER
2023 MOVE-IN**

TEMPORARILY UNLOAD IN
PANGEA STRUCTURE,
SCHOLARS DRIVE OR
INTERNATIONAL LANE

After unloading, proceed
to



ERC Office of Residence
Life by
MIDDLE EARTH LOUNGE



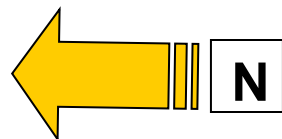
PICK UP KEYS

STUDENTS ONLY: Have a
valid PHOTO ID, and your
QWIK PASS ready for
move-in staff.

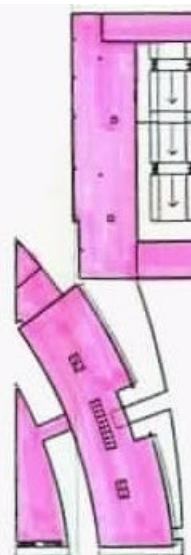
After receiving your keys,
meet your family at your
assigned building.

PARENTS/HELPERS:
Proceed to unload vehicle;
meet your student at their
assigned building to drop
off belongings.

Ventanas
(Scheduled to
re-open 9/23)



Mesa Verde Hall



Geneva Hall

Kathmandu House

Cuzco House

Asante House

Pangea
Drive

INTERNATIONAL LANE: Active unloading on W side (Park parallel)

SCHOLARS DRIVE Active unloading on W side (Park parallel)

Middle East Hall

Oceania Hall

Earth Hall North

Earth Hall South

PICK-UP KEYS
(Middle Earth Lounge)
STUDENTS ONLY: Pick up
keys here; meet your family
at your assigned building.



**PANGEA PARKING
STRUCTURE:**
UNLOADING ONLY at
NE and NW entrances
(Levels 4 & 5)
Proceed to
Middle Earth Lounge for
Keys
After unloading proceed
to park within Pangea or
follow signs to **HOPKINS
PARKING STRUCTURE**

Africa Hall

Asia Hall

Europe Hall

Latin America
Hall

North America
Hall

ERC Office of Residence Life
110 Middle Earth

North Torrey Pines Road

Welcome to Eleanor Roosevelt College!
MOVE-IN INSTRUCTIONS FOR FALL 2023
Depending on where you will live, temporarily unload on International Lane (for East Side or I-House) or unloading zones in Pangea Parking Structure (for West Side). After unloading, move car to park within Pangea or follow signs to Hopkins Parking Structure